



Curriculum Connections

Here starts
the lesson!

Table of Contents!



Overview

How do teachers use documents in a lesson?

1. Instructional Strategy:

Document Based Questions (DBQ)



2. Instructional Strategy:

Inquiry Design Model (IDM)

3. Instructional Strategy

Enduring Issue Essay



How Do You Use Primary Documents In A Lesson?

When in a lesson do you use Primary Documents?

Body of lesson-

Inquiry

Set of Doc

Centers

Acquiring content

and skills

Beginning of Lesson-

Capture Attention

Review Material

Preset

Assessment-

Skill and Content



How can primary sources be used in the classroom?



- As an opening or anticipatory set
 - Primary sources are great for engaging students at the beginning of the lesson. (**Connect**)
 - Historical documents get students asking questions. (**Wonder**)
- Teaching students the skill of analysis
 - Historical documents require students to ask questions, formulate answers and make inferences. (**Investigate**)
 - Students must also put the information together to determine the significance of the document. (**Construct, Express, and Reflect**)
- Project-Based Learning
 - Primary sources provide the evidence for historical investigation and discovery by the student.

Other ways to
use docs

A graphic of a spiral-bound notebook with a white page, a red cover, and a green background. The page has a spiral binding at the top. On the left side, there are two horizontal tabs, one yellow and one orange. In the center of the page, the number '01' is displayed in a large, bold, black font, surrounded by a light green circular arrow. Below this, the text 'OVERVIEW of Strategy' is written in a bold, red, sans-serif font. Further down, the text 'Document Based Instruction (DBQ)' is written in a smaller, black, sans-serif font.

01

OVERVIEW of Strategy

Document Based
Instruction (DBQ)

DBQ

DBQ is an essay or series of short-answer questions that is constructed by students using one's own knowledge combined with support from several provided sources.

Sample
of
DBQ



Activity: Can you identify a small grouping of documents that all contribute to answering an overarching question?

Get ready to share in a breakout group

Doc 1:
Diary entry of
a 12 year old
working
environment

Doc 2:
Factory
Inspection
Records



Doc 3:
Photos of local
factory showing
poor conditions

Doc. 4:
Child labor
court records



All documents contribute to the understanding of why child labor laws were needed.



01

OVERVIEW of Strategy

Inquiry Design Model
(IDM)

What Is The IDM?



- Unique to the IDM is the blueprint, a one-page representation of the questions, tasks, and sources

- Overarching compelling and supporting questions that frame and give structure to the inquiry
- Documents that allow students to explore the compelling question, build content expertise, and develop the disciplinary skills to successfully support and defend their ideas
- Assessments throughout the unit requiring document based inquiry.
- Culminating assessment answering the compelling question while using many documents throughout unit to support claims.

IDM

Sample
of
IDM



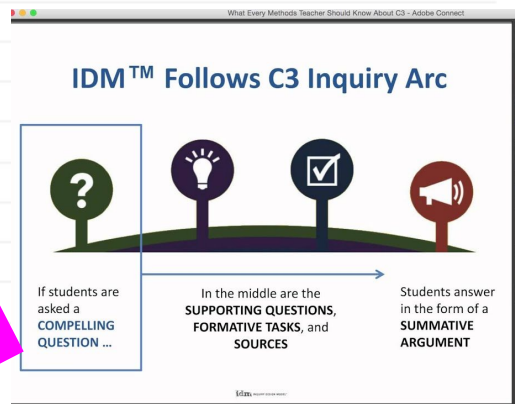
How to Use IDM
Form



Template
of
IDM



Click image to go
to website →





You do not have to recreate the wheel...how can you add local connections to a national issue?

Assignment



Click [here](#) to view the New Deal IDM.

Do you have documents that could supplement each section of the existing IDM?

A graphic of a spiral-bound notebook with a white page, a red cover, and a green background. The page has a spiral binding at the top. On the left side, there are two horizontal tabs, one yellow and one orange. In the center of the page, the number '01' is displayed in a large, bold, black font, surrounded by a light green circular arrow. Below this, the text 'OVERVIEW of Strategy' is written in a bold, red, sans-serif font. At the bottom, the text 'Enduring Issues Essay' is written in a smaller, black, sans-serif font.

01

OVERVIEW of Strategy

Enduring Issues Essay

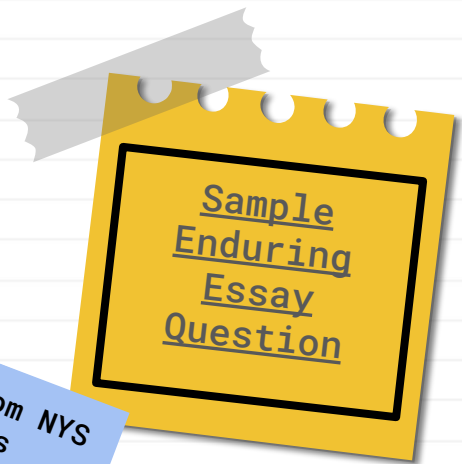
Enduring Issues Essay:

A student must be able to analyze numerous documents and argue that the issue has endured by showing how the issue has affected people or has been affected by people, and how the issue has continued as an issue, or has changed over time.



Book Title. P52

Features of Enduring Issues Essay



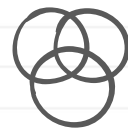
Sample from NYS
Regents



NYS List of
Enduring Issues



**Sample of
Completed Teacher
Planning Sheet**

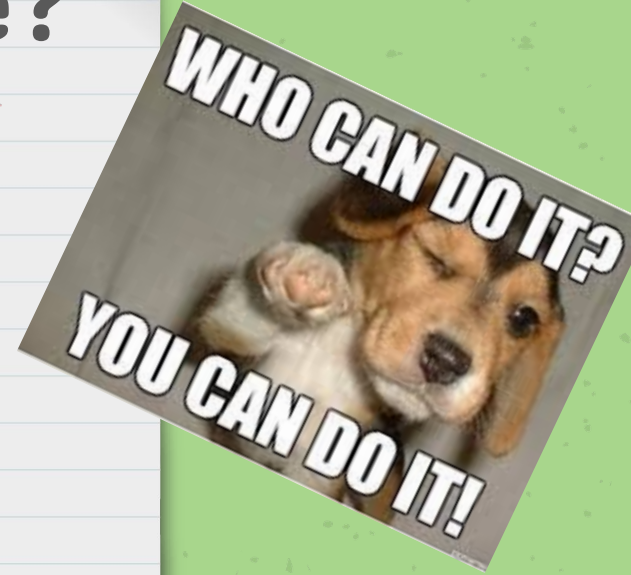


Blank Teacher
Planning Sheet

What documents do you have?

Can you identify a
small grouping of
documents that
represent different
time periods but
share a common
enduring issue?

Get Ready
to share
in
breakout
groups



Review of Some of the Ways to Use Documents in the Classroom

Indiv Doc to supplement lesson



DBQ



IDM



Enduring Essays

2nd

Pull
Docs

3rd

Pick
one
option

1st



Exam
content