



## Extra

### Archie Beaver's State Symbols Memory Game

Cut out the cards for this game. Shuffle them, then lay them face down on a flat surface. Players take turns selecting two cards. If the cards are a match (name of symbol and picture), that player keeps the cards and goes again. If the cards do not match, that player's turn is over and the next player goes. The winner is the player with the most matches.



**The Beaver**

**The New York  
State Mammal**



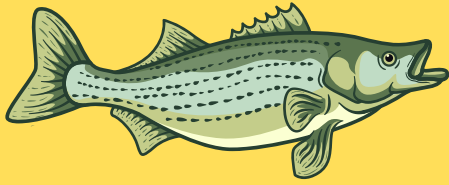
**The Tree Frog**

**The New York  
State Reptile**



**The Brook Trout**

**The New York  
State Freshwater  
Fish**



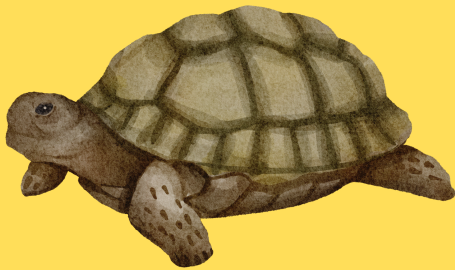
**The Striped Bass**

**The New York  
State Saltwater  
Fish**



**The Wood Frog**

**The New York  
State Amphibian**



**The Snapping Turtle**

**The New York  
State Reptile**



**Garnet**

**The New York  
State Mineral**



**Yougurt**

**The New York  
State Snack**



**Milk**

**The New York  
State Beverage**



**The Apple**

**The New York  
State Fruit**



**The Sugar Maple**

**The New York  
State Tree**



**The Rose**

**The New York  
State Flower**



**The Blue Bird**

**The New York  
State Bird**



**The Lady Bug**

**The New York  
State Insect**



**The Apple Muffin**

**The New York  
State Muffin**





**The Eurypterid**

**The New York  
State Fossil**



**The Lilac**

**The New York  
State Bush**



**The Bay Scallop**

**The New York  
State Shell**







**The Working Dog**

**The New York  
State Dog**



## Extra

### Archie Beaver's State Symbols Memory Game - Key

 The Beaver	The New York State Mammal	 The Apple	The New York State Fruit	 The New York State Dog
 The Tree Frog	The New York State Reptile	 The Sugar Maple	The New York State Tree	
 The Brook Trout	The New York State Freshwater Fish	 The Rose	The New York State Flower	
 The Striped Bass	The New York State Saltwater Fish	 The Blue Bird	The New York State Bird	 The Working Dog
 The Wood Frog	The New York State Amphibian	 The Lady Bug	The New York State Insect	
 The Snapping Turtle	The New York State Reptile	 The Apple Muffin	The New York State Muffin	
 Garnet	The New York State Gem	 The Eurypterid	The New York State Fossil	
 Yogurt	The New York State Snack	 The Lilac	The New York State Bush	
 Milk	The New York State Beverage	 The Bay Scallop	The New York State Shell	